

# MiniPOS Lite SETUP

The document explains how to setup MiniPOS Lite how to use tit.

**This document is developed, maintained and is a property of:**

INTECH d.o.o.

Vrhovčeva 10

1000 Ljubljana



Reference	PAYWISER 2019 <sup>TM</sup> ©
Filename	MiniPOSLiteSetup.docx
Status	Active
Version	1.0
Version date	2.10.2019
Confidentiality level	For Partner use

**Previous editions:**

Version	Description	Version date	Author	Checked by
1.0	Documentation creation	2.10.2019	Peter Mernik	

It is the sole responsibility of the user to check this version for the latest update

## TABLE OF CONTENTS

1	Introduction.....	4
2	MiniPOS Lite app .....	4
2.1	Download location .....	4
2.2	Prerequisites for this app.....	4
2.3	Configure the app for use .....	4
2.4	How to use the app.....	7
3	Support .....	7

## 1 Introduction

---

This document describes where to download MiniPOS Lite and how to use it.

## 2 MiniPOS Lite app

---

### 2.1 Download location

This app is available on Google Play Store. Open Play Store on android device and in the search field enter PayWiser MiniPOS Lite and install the app.

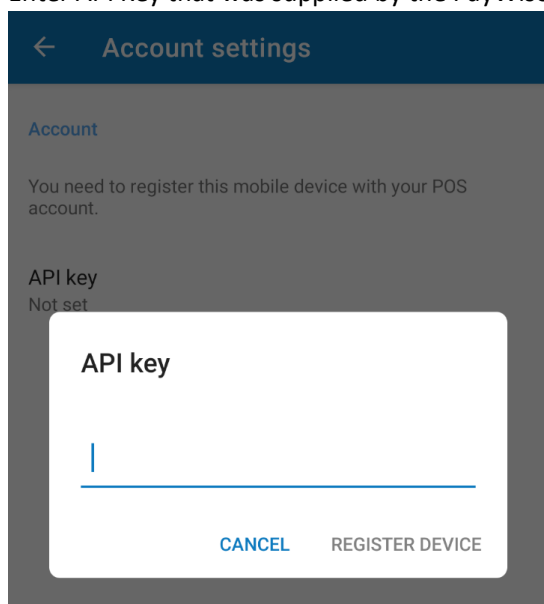
Or download it from <https://play.google.com/store/apps/details?id=si.intech.pwminipos.lite>

### 2.2 Prerequisites for this app


In order for MiniPOS Lite to work properly, you need to have Bluetooth thermal printer that will be connected to this app.

### 2.3 Configure the app for use

1. Open the MiniPOS Lite app.
2. Confirm all permissions that are requested by the app, because the app needs these permissions to work properly.
3. Enter API Key that was supplied by the PayWiser support team.



4. After app restarts enter Terminal ID that was supplied by the support team. Tap on "Terminal ID" and enter ID.

 Account settings

Account

Account name  
PayPlaza integration internal test


UNREGISTER DEVICE

Terminal

You need to register terminal with this mobile device.

Terminal ID  
Not set

5. Enter login credentials (Username and Password) that were supplied by the PayWiser support team.

 Account settings

Account

Account name  
PayPlaza integration internal test

UNREGISTER DEVICE

Terminal

Terminal ID  
ecr\_intsim

UNREGISTER TERMINAL

User login

You need to input user login data and execute login for this user.

Username  
Not set

Password  
Not set

LOGIN

6. Tap on "LOGIN" to log in.

<
Account settings

UNREGISTER DEVICE

Terminal

Terminal ID  
ecr\_intsim

UNREGISTER TERMINAL

User login

You need to input user login data and execute login for this user.


Username  
pero

Password  
\*\*\*\*\*

LOGIN

7. Paire printer. This process starts automatically and will pair with the first available printer (the printer must be turned on).

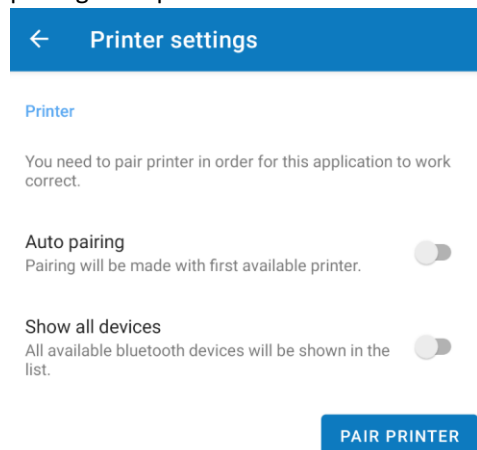
<
Printer pairing



Pairing printer in progress...

CANCEL PAIRING

If a printer could not be paired automatically then press “CANCEL PAIRING” and disable “Auto pairing” and press “PAIR PRINTER” to start manual pairing.



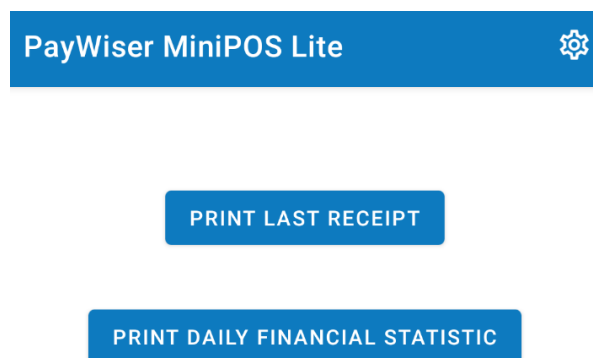
8. The app is now configured and you can close the MiniPOS Lite app.

## 2.4 How to use the app

This app doesn't need to be open or running in the background in order for printing functionality to work.

Application interface offers to user two option for manual printing:

1. Print last receipt
2. Print daily financial statistic



## 3 Support

For additional help or questions, please direct all your inquiries to your local implementation partner or PayWiser support.

**International** support: [support@paywiser.eu](mailto:support@paywiser.eu)

INTECH d.o.o.  
Vrhovčeva 10  
1000 Ljubljana  
[www.paywiser.eu](http://www.paywiser.eu)  
[info@paywiser.eu](mailto:info@paywiser.eu)